

SPARE PARTS SECTION

METAL DUST COLLECTOR

Model. DCM-202

Order Code W321

*Edition No : DCM-202-1**Date of Issue : 08/2020*

The following section covers the spare parts diagrams and lists that were current at the time this manual was originally printed. Due to continuous improvements of the machine, changes may be made at any time without notification.

HOW TO ORDER SPARE PARTS

1. Have your machines **model number, serial number & date of manufacture** on hand, these can be found on the specification plate mounted on the machine
2. A scanned copy of your parts list/diagram with required spare part/s identified.

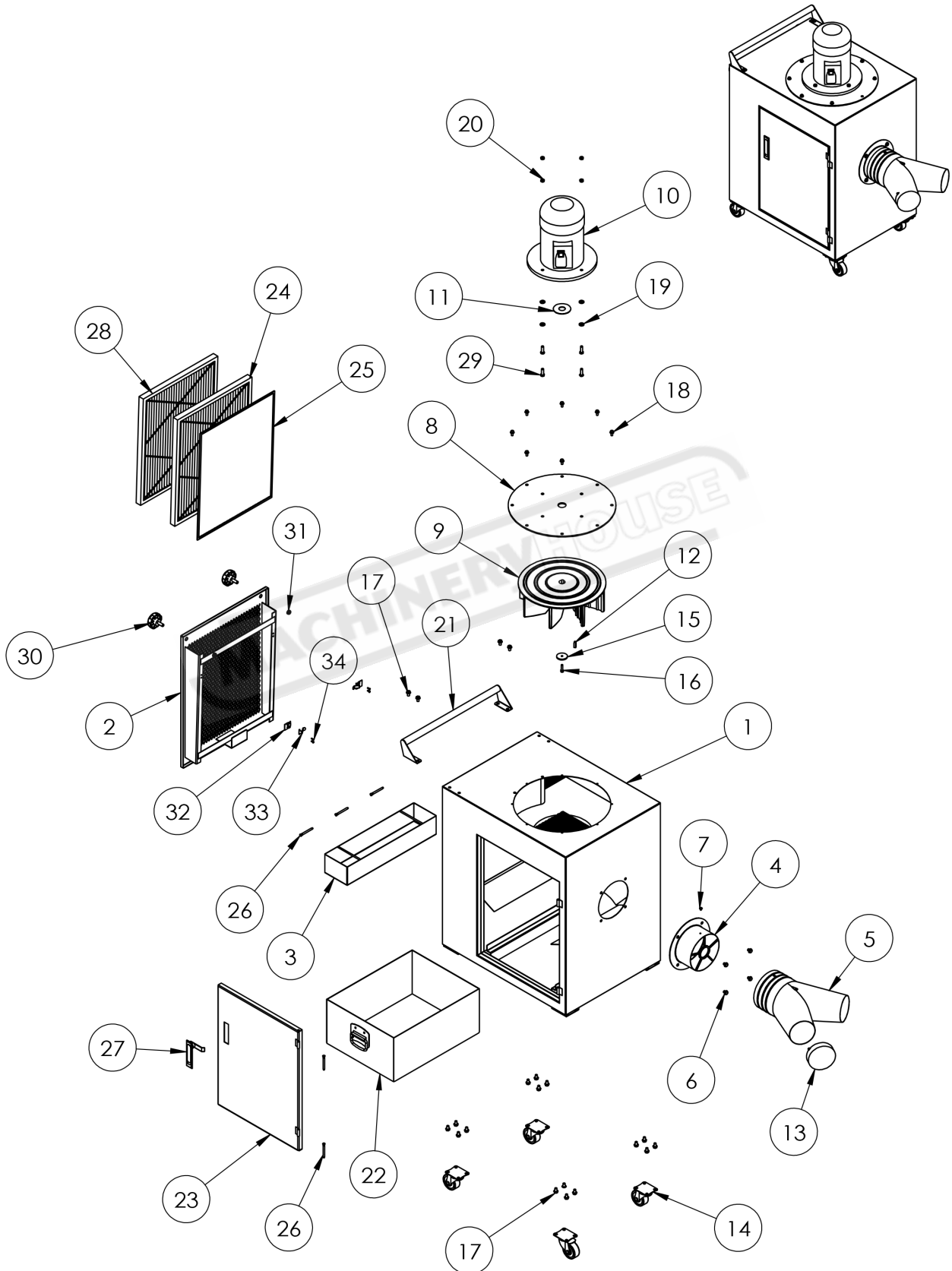
NOTE: SOME PARTS MAY ONLY BE AVAILABLE AS AN ASSEMBLY

3. Go to www.machineryhouse.com.au/contactus and fill out the inquiry form attaching a copy of scanned parts list.

CONTENTS

Spare Parts Diagram.....	20
Spare Parts List.....	21

SPARE PARTS DIAGRAM



SPARE PARTS LIST

ITEM	DESCRIPTION	QTY.	ITEM	DESCRIPTION	QTY.
1	MAIN BODY	1	18	FLANGE BOLT 1/4" X 1/2"	8
2	SIDE DOOR	1	19	WASHER 5/16"	4
3	DUST TRAY	1	20	NUT 5/16"	4
4	INLET 6"	1	21	HANDLE	1
5	INLET ADAPTER 6" X 4" X 2	1	22	COLLECTION DRAWER	1
6	FLANGE BOLT 5/16" X 3/8"	4	23	DOOR	1
7	FLANGE SCREW 3/16 X 1/4"	1	24	ACTIVE CARBON FILTER	1
8	MOTOR PLATE	1	25	STAINLESS FILTER	1
9	IMPELLER	1	26	HINGE PIN	5
10	MOTOR	1	27	LATCH	1
11	MOTOR PACKING	1	28	PLEATED 1 MICRON FILTER	1
12	KEY 7 X 7 X 25	1	29	HEX BOLT 5/16" X 1	4
13	INLET ADAPTER CAP 4"	1	30	KNOB 3/8" X 1"	2
14	CASTER 2-1/2" SWIVEL	4	31	LOCK NUT 3/8"	2
15	IMPELLER WASHER	1	32	RETAINING CLIP	2
16	CAP SCREW M6 X 25	1	33	ADJUSTMENT BUCKLE	2
17	FLANGE BOLT 5/16" X 1/2"	20	34	TAB SCREW	4

NOTE: SOME INDIVIDUAL PARTS MAY ONLY BE AVAILABLE AS AN ASSEMBLY